

Sponsored by Rehoboth Antiquarian Society and Rehoboth Cultural Council

Rehoboth Historical Quest #2: A Treasure Hunt to Learn About Our Past

"See if You Can Find these Carpenter Museum Artifacts"

*Our museum's full of history, as you may know well
But let's see if by a few clues some artifacts you can tell.
The clues look quite easy, but you still could be thwarted.
Find them all, and the treasure you will be rewarded.*

*Directions: Follow the clue to each artifact. When you find the artifact, fill in the information as directed. Then solve the puzzle on page 3.
The answers will open the secret lock on the Treasure Box. Have fun!*

Clue #1

Where the tenon meets the mortise is key to this clue.
Go to the barn and find where it's explained to you.
The beam and the post were connected by peg.
With a crew from Rehoboth this barn we did make.

Directions: Fill in the last number of the year we raised the barn: 1 9 9 _____

Clue #2

In Indian days, fires cooked food.
Imagine trying to cook for a brood!
A chief would have a big one of course.
Imagine carrying it without a horse!

Directions: Count the age of Martha Blanding when she died: 9 _____

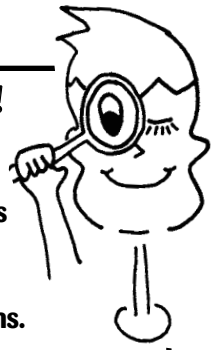
Clue #3

Yes, it combs something fine - but, no, not hair.
"Thread" through barn artifacts. You'll find it there.
Cloth was sewn with needles, but thread was made of pins.
This was a long, tiring process for our long ago kin.

Directions: Count the number of hetchels on display _____

More Quests?!
Yes, there are two more Quests: one at the library, and one outside about the trolley! Get your clue sheets at the library or the museum. (The museum is open regularly Sundays 2-4 p.m., and during the week. Please call (508) 252 3031.

IMPORTANT!
Please do not touch any of the museum pieces! All of the clues can be easily seen without moving or picking up any items.



Clue #4

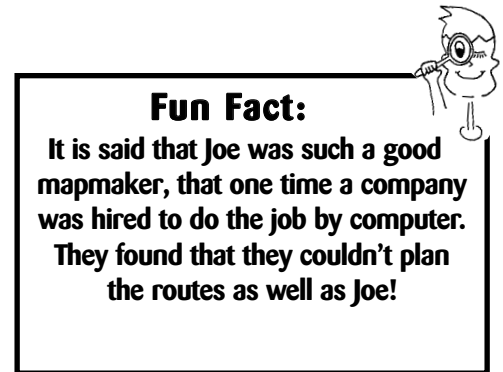
Rehoboth has had many clambakes through the years.
 There's a photo of one of them in the museum here.
 They once were so popular 1800 people attended.
 That's a lot of clams and potatoes that had to be tended!

Directions: Write the last number of the year this photo was taken. 1 9 3 _____

Clue #5

This map's like no other, never used by a car.
 Making it was a bother, though it won't take you far.
 When it was done, parents here would all smile.
 But it was so complicated it took a whole summer to compile.

*Directions: Count the number of letters in the
 mapmaker's last name _____*



Clue #6

Somewhere here there's a man named Darius.
 He donated money to build the library, if you're curious.
 Many in town share his family ties.
 His last name, you'll see, is no surprise.

Directions: Write the number of children in Darius' family (remember to include Darius!) _____

Clue #7

Pewter containers and utensils, we are told
 Were used in colonial times - they were made with a mold.
 These vessels of pewter are not great in size
 But you'll find them easily if you are wise.

*Directions: Count the number of vessels _____
 (Hint: They are VERY SMALL and NOT in the case with all the other pewter pieces.)*

Clue #8

In the 1800s if you were a girl
 On a comfy chair you might curl
 To make this lovely art with thread
 And on it letters can be read.

Directions: Count the number of samplers _____

Clue #9


You might use this in colonial days
The item it holds would darken as you gaze.
It twists to make sure you cook both sides
“Careful! It’s hot!” to a child you might chide.

Directions: Count the number of hearts on this gadget. _____

Clue #10

This museum treasure on loan to us
Sings when it’s time without any fuss.
A stately treasure, a family loan;
This tall piece calls the museum home.

Directions: Count the number of columns on this piece: _____

Fun Fact:  This is owned by the Carpenter family. It is one of the most valuable items in this museum

Clue #11

If you want time for your next clue
There will be no hands to help you.
Long ago when you needed to know the minutes
You’d use this tool with only grains in it.

Directions: Count the number of grains (just kidding!!). Count the number of drawers on the bureau on which this object sits. _____

Clue #12

A key to finding this artifact seems very clear
It was built long ago...1853 was the year.
If you hadn’t much talent, it would be hard to bear
But at least you’d sit on a nice plush, bright chair.




Stamp here
to show you finished the Quest!

Directions: Count the number of letters in this instrument’s name _____

SOLVE THE LOCK COMBINATION AND OPEN THE TREASURE BOX!

_____	+	_____	-	_____	=	_____
Clue 1		Clue 2		Clue 3		1st Number of Combination
_____	-	_____	+	_____	=	_____
Clue 4		Clue 5		Clue 6		2nd Number of Combination
_____	+	_____	-	_____	=	_____
Clue 7		Clue 8		Clue 9		3rd Number of Combination
_____	+	_____	-	_____	=	_____
Clue 10		Clue 11		Clue 12		4th Number of Combination



Massachusetts Cultural Council

